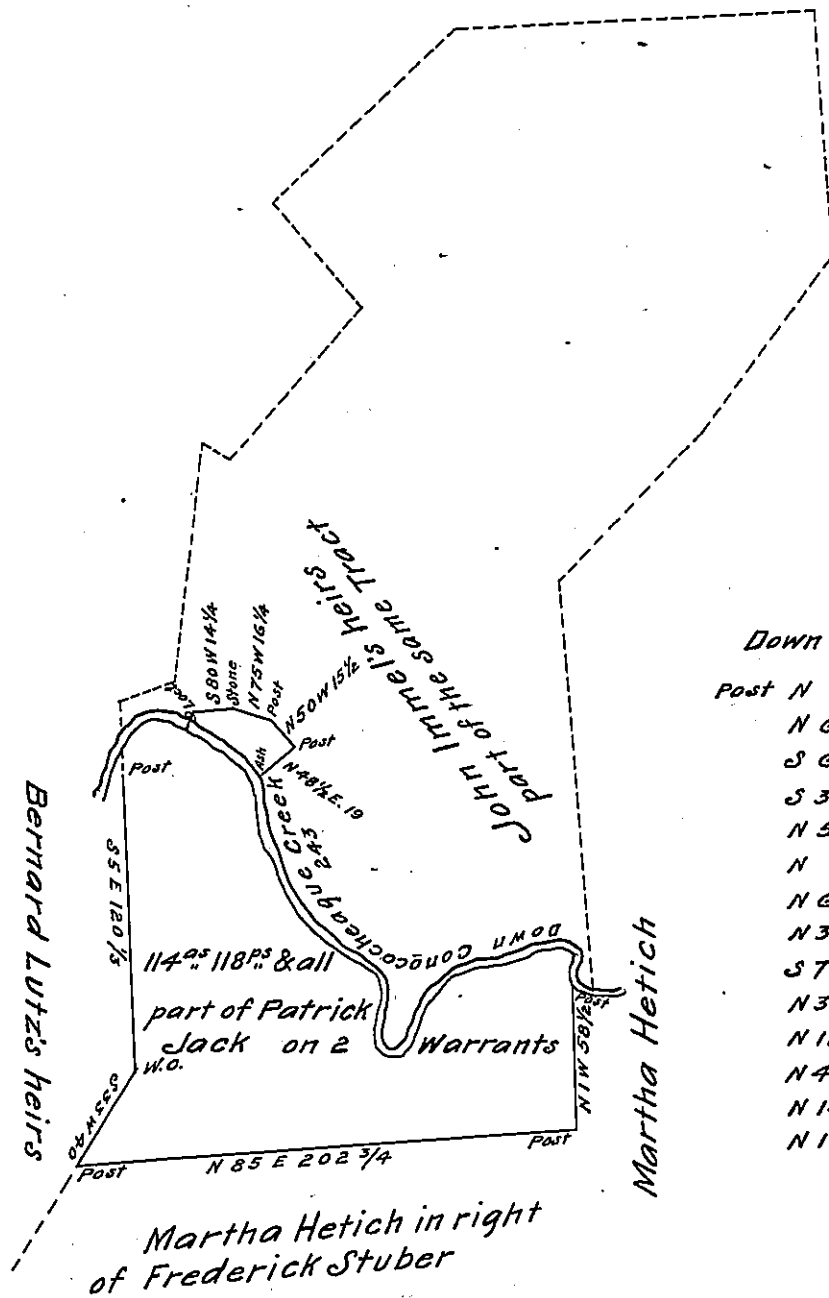


Down the Creek  
from the Locust

S 6 W 4  
N 65 W 14 1/2  
S 57 1/4 W 16 3/4  
S 11 1/4 W 21  
56 1/4



Down the Creek

Post N 4 E 8.4  
N 62 1/2 W 9.2  
S 69 W 46.  
S 35 3/4 W 31 3/4  
N 50 W 11.  
N 4 E 27.  
N 62 W 32.  
N 37 W 13 1/2  
S 71 W 6.  
N 34 W 6.  
N 11 1/2 E 11 1/2  
N 42 W 14.  
N 14 W 20  
N 15 E 6.7 to Ash  
243

114<sup>ac</sup> 118<sup>ps</sup> & all. Situated in Green To. E County being part of a Larger Tract of 477<sup>ac</sup> 138<sup>ps</sup> & all. Surveyed In pursuance of two Warrants Granted to Patrick Jack the one for 300<sup>ac</sup> bearing dated the 7<sup>th</sup> of December 1737 the other for 200<sup>ac</sup> dated 28<sup>th</sup> of Feb. 1734 Resurveyed & divided off the above part for Martha Hetich the 11<sup>th</sup> of September 1833

To Jacob Spangler Esq. }  
Surveyor General }

Seth Kline,  
D. S.

IN TESTIMONY that the above is a copy of the original remaining on file in the Department of Internal Affairs of Pennsylvania, made conformably to an Act of Assembly approved the 16th day of February, 1833, I have hereunto set my Hand and caused the Seal of said Department to be affixed at Harrisburg, this  
twelfth day of October, 1905.

*James B. Brown*  
Secretary of Internal Affairs.